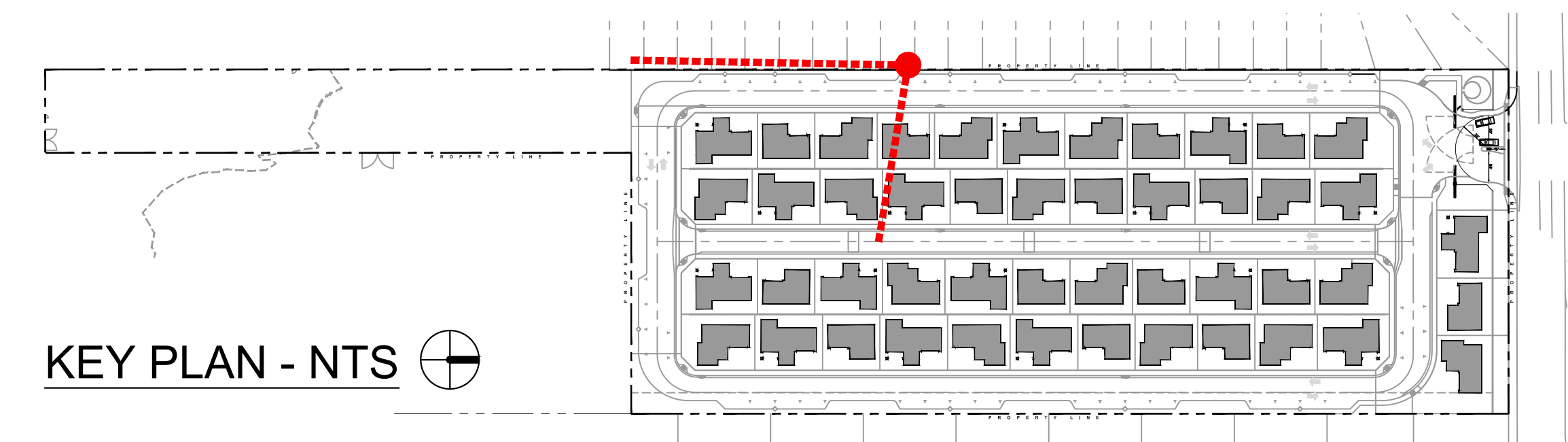




VIEW LOOKING SOUTH TOWARDS PARK



Architecture + Planning
17911 Von Karman Ave,
Suite 200
Irvine, CA 92614
949.851.2133
ktgy.com



Warmington Residential
3090 Pullman Street
Costa Mesa, CA 92626

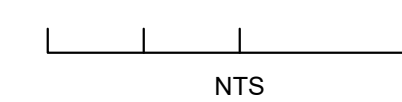


UNITED CIVIL, INC.
30141 AGOURA ROAD, SUITE 215
AGOURA HILLS, CA 91301
PH: (818) 707-8648
FAX: (818) 707-8649



BELTRAMO RANCH
MOORPARK, CA # 2018-0860

Plot Date: 09-22-2021
1st Submittal: 06-04-2021
2nd Submittal: 09-24-2021



PERSPECTIVE RENDERING

A0.03